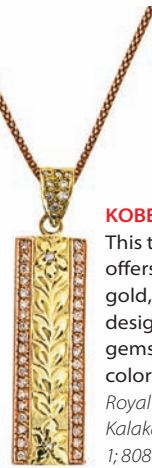


STYLE WATCH

# Local Aloha Wear

From "aloha" shirts to accessories, check out these shops for a look at some authentic island fashions.

# 2



### KOBE JEWELRY

This top local jeweler offers a dazzling array of gold, silver and platinum designs and precious gemstones in many colors, shapes and sizes. *Royal Hawaiian Center, 2233 Kalakaua Ave., Bldg B, Level 1; 808.923.2282*



# 1

### HILO HATTIE

Matching fashions for you and the entire family. 700 Nimitz Hwy., 808.535.6500; 1450 Ala Moana Blvd., 808.973.3277; [hilohattie.com](http://hilohattie.com)



# 3

### LOLE HAWAII'I

Offers an array of aloha-print fashion, including such traditional Hawaiian wear as this pahu skirt. *Royal Hawaiian Center, Bldg C, Level 2; 808.922.9200*



# 9

### 'IOLANI

Island-inspired, casual tropical resortwear for men and women. 1234 Kona St., 808.593.4520; [iolani.com](http://iolani.com)



# 10

### ROYAL HAWAIIAN GOLF SHOP

More than just golf clubs and shirts, Royal Hawaiian Golf Shop boasts such fun accessories as this fedora hat. *Royal Hawaiian Center, 2233 Kalakaua Ave., Bldg A, Level 3; 808.924.0144*



# 4

## CRAZY FISH

Known for matching mom-and-daughter outfits, Crazy Fish also has great accessories and handbags.

Royal Hawaiian Center, Bldg C, Level 1; 808.923.4748

## REYN SPOONER

Creating classic men's sportswear since 1956. 1450 Ala Moana Blvd., 808.949.5929; 4211 Waialae Ave., 808.737.8313; 2255 Kalakaua Ave., Shop 9, 808.275.4491; reynspooner.com

# 8



# 5

## ROYAL HAWAIIAN BOUTIQUE

In addition to aloha shirts and women's fashions, this quaint shop has great take-home memorabilia pieces from which to choose. Royal Hawaiian Center, Bldg A, Level 3; 808.924.2120



# 6

## NOA NOA

Featuring a collection of patterns and colors in traditional Pacific Island tapa.

Hilton Hawaiian Village Waikiki Beach Resort, 2005 Kalia Road; Ward Centre, 1200 Ala Moana Blvd., 808.593.0343; Beach Walk, 226 Lewers St., 808.923.6500



# 7

## KOA NANI

Fine jewelry pieces inspired by the natural wonders of the Hawaiian Islands.

Royal Hawaiian Center, 2201 Kalakaua Ave., 808.923.8889, koanani.com/en

